



Sambro Island 1758

The Nova Scotia Lighthouse Preservation Society
Vol. 16, No. 4, December 2009 www.nslps.com

The LightkeeperTM

IN THIS ISSUE

- MYSTERY LIGHT
- HORTON BLUFF
LIGHTHOUSE RISES
AGAIN
- NEWS AND VIEWS
- FAREWELL

• IT'S TIME TO RENEW
FOR 2010! SEE
ENCLOSED NOTICE!





The objectives of the Nova Scotia Lighthouse Preservation Society are: to promote and to support the preservation and awareness of Nova Scotia

lighthouses; to assist community groups in leasing or taking ownership of lighthouse sites; to provide access to written research and photographic documentation, to initiate oral history research and to classify and monitor the status of historic lighthouse sites.

WEBSITE: <http://www.nslps.com>

LIGHTKEEPER EDITOR: Chris Mills

LAYOUT: Matt Leights, Graphic and Print Production program, NSCC

PATRONS: Barbara Allen, Nancy Walker, Rachel Hoogenbos, Martin Rudy Haase, Betty Schloss

SUSTAINING MEMBERS: Lloyd Merrill, Michel Forand, Mike Tilley, Roberta & Walden Wambolt, Stanley Van Dyke, Mark Stewart & Marni Gent, Anne Ostrosser, Bill & Joanne McCormick, John Freeman, Joan Davis, Lytton von Bretzenheim, Denyse Contrasty, Alison Fletcher, James L. Slechta

AFFILIATES: Burntcoat Head Park Association, Cape Sable Historical Society, Devil's Island Light Society, Five Islands Lighthouse Preservation Society, Gilbert Cove & District Historical Society, Greville Bay Shipbuilding Museum Society, Henry Island Lighthouse Preservation Society, Islands Historical Society, Louisbourg Lighthouse Society, MacNab's Island Ferry, North Highlands Community Museum, Northumberland Fisheries Museum, Port Bickerton & Area Planning Association, Port George District Lighthouse Society, Sandy Point Community Recreation Group, Shag Harbour Incident Society, Spencer's Island Community Association, Terence Bay Lighthouse Committee, Tiverton & Central Grove Heritage Association, Village on the Canal Association, Walton Area Development Association.

NSLPS EXECUTIVE 2009/2010

President/Lighthouse Protection Act Committee:

Barry MacDonald 827-2027

e-mail: threefathom@eastlink.ca

Past President: Tony Thompson 477-7366

e-mail: tony@mscs.dal.ca

First Vice-President: Graham McBride

Second Vice President/Lightkeeper Editor:

Chris Mills 868-2313

e-mail: ketch1@eastlink.ca

Secretary: Joanne McCormick

Treasurer/Membership Secretary: Lew Perry 434-7208

e-mail: lewis001@ns.sympatico.ca

Member-at-Large: Denyse Contrasty

Member-at-Large: Janet Leigh Schaffner

Member-at-Large: Andrew Powter

Cover: The Horton Bluff Lighthouse in 1934. *Kelly Anne Loughery/Canadian Coast Guard*

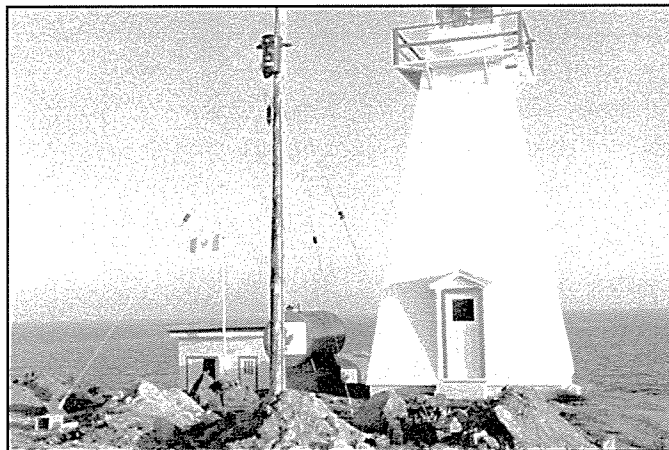
Cover Inset: Horton Bluff during its heyday. *Courtesy Raye Myles*

MYSTERY LIGHT

Congratulations to NSLPS member Jim Slechta for correctly identifying Abbott's Harbour in Yarmouth County as the October/November Mystery Light. Send your guesses for this issue's mystery light to: The Editor, Nova Scotia Lighthouse Preservation Society, c/o Maritime Museum of the Atlantic, 1675 Lower Water Street, Halifax, NS B3J 1S3 or e-mail ketch1@eastlink.ca



WHERE IS THIS NOVA SCOTIA MYSTERY LIGHT? *KELLY ANNE LOUGHERY/CANADIAN COAST GUARD*



ONLY THE LIGHTHOUSE REMAINS TODAY AT OUR DECEMBER MYSTERY LIGHT, BUT IT WAS HOME TO SEVERAL KEEPERS AND THEIR FAMILIES FOR MORE THAN A CENTURY. *KELLY ANNE LOUGHERY/CANADIAN COAST GUARD*

RECONSTRUCTION OF HORTON LIGHTHOUSE

Raye Myles



HORTON BLUFF IN APRIL, 1938. KELLY ANNE LOUGHERY/CANADIAN COAST GUARD

In December of 2001 I purchased a piece of land on the Bluff Road, near Hantsport, where I planned to build a cottage that would allow my family and me a place to get away and relax. Well I'm still waiting to relax and don't see that coming for a few more years.

After walking the property and realizing that the two thousand feet of water frontage had some of the best views of the Avon River and Minas Basin, I had seen my plans changed. I knew we had to build on the bluff overlooking the mouth of the Avon.



TAKEN BY THE ROYAL CANADIAN AIR FORCE IN 1944. KELLY ANNE LOUGHERY/CANADIAN COAST GUARD

This came with its challenges; the property was an original 1764 land grant of approximately seventy acres which would require us to build a driveway that turned out to be over two thousand feet long. We found an old road bed that showed up on the survey maps done in the 1860s when the Windsor and Annapolis Railway Company was preparing to run the first railway line though the Annapolis Valley. We spent three years clearing and rebuilding this road.

During those three years I came across a photo taken of the second Horton Bluff lighthouse around 1900 and thought that it would make an ideal cottage for this location. While talking with Lolita Crosby (widow of former light keeper Bill Crosby) about the challenges in determining the original dimensions from a 100 year old photograph, she suggested I contact the Coast Guard. She told me they kept good records of the old lights and didn't clean out the closet very often. I was a little doubtful as to what they might have to help me in determining the actual size of the structure some forty plus years after they bulldozed and burned the old lighthouse on the beach.

Well, let me tell you after many calls to a few different Coast Guard offices, I was pleased to make contact with Judy Currie-Thibodeau, Navais Information

Officer in Saint John, New Brunswick. She had remembered seeing a file on the Horton Bluff lighthouse, but she wasn't sure how much information we might get from that file. She said she would dig it out and let me know.



CLEARED LAND AT THE SITE OF THE "NEW" HORTON BLUFF LIGHTHOUSE. RAYE MYLES

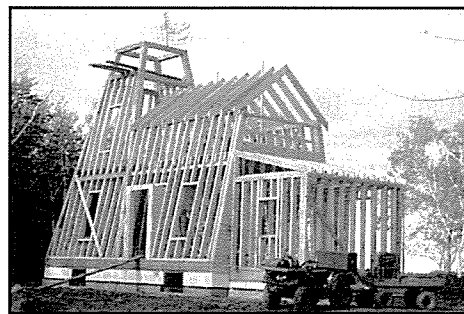
I was traveling to Saint John the next week on business and I went in to see if Judy had had any luck. She told me I would be pleased with what she found. Judy took me into the file room and handed me the Horton Bluff folder and when I opened it (my heart racing) to find a copy of the original drawings, I was grinning from ear to ear.

The drawing was marked "Engineer's Office, Department of Marine, Ottawa, June 1883". It was showing its age, a little tattered, with some pieces missing. After some discussions I was loaned the drawing so that I could have it scanned into digital computer files. The original and a copy of the scan were returned to the file and I also gave Judy a framed copy of the photo that got me started down this path.



THE POST AND BEAM LIGHTHOUSE TAKES SHAPE IN AUGUST, 2008. RAYE MYLES

With help from Kwik Kopy printing in Burnside, we restored the 1883 drawing, filling in the missing sections digitally until we had a clean copy to work with. Next stop was the offices of BMR Structural Engineering to see what we would need to change to come up to current building codes. After their review,

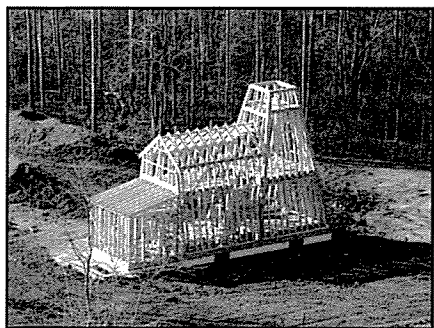


RAYE'S LIGHTHOUSE BEGINS TO BEAR MUCH MORE THAN A PASSING RESEMBLANCE TO THE 1883 HORTON BLUFF LIGHT. RAYE MYLES

they supplied me with a new set of drawings, changing only the stairs and the size of two windows on the second floor (the original stairs were too steep and the windows too narrow for a fire escape).

Now, with drawings in hand, it was off to the Kings County Municipal offices to get a building permit. Their first response was "You can't build a lighthouse, the bylaws won't allow it."

What bylaw says you can't build a lighthouse? The Coast Guard had told me that I could not install an operating light, but they had no issues with building a full scale replica, minus the light.



OCTOBER, 2008. ALMOST READY FOR SHEATHING. *RAYE MYLES*

the end we were issued a building permit on February 14, 2008.

We broke ground June 19, 2008; our intention was to do everything we could possibly do ourselves. Due to building codes we needed to have someone else do the pouring of the concrete walls after we erected them. One task that gives you a whole new respect for the tradesmen of the 1880s is the timber frame aspect of a building of this design.

We went to Dan and Kimberley Reagan of Timberhart Homes for help with this monumental task. Dan also came to site to turn the logs that were cut while clearing the top of the bluff, into the lumber that

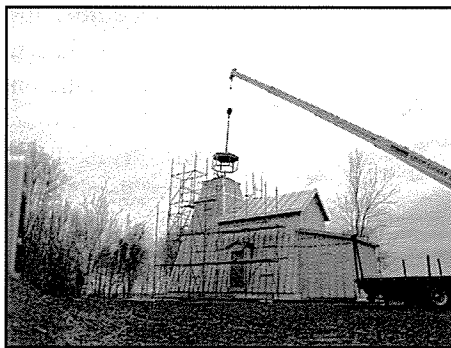


THE FABRICATED LANTERN READY TO HIT THE ROAD FOR RAYE'S LIGHTHOUSE. *RAYE MYLES*

we would need to frame the lighthouse. This allowed us to stay true to the original design using 3"x 6" and 4"x 6" studs in the construction. Hefler Forest Products in Lower Sackville cut all the other custom-sized lumber required. With the help of my son Nathan as well as Murray and Justin Clowry and a few other friends, we were able to erect and sheathe in the main structure in 2008.

We have spent most of 2009 building the garage that will act as the utility building housing the controls for the off-grid power system that will supply power via

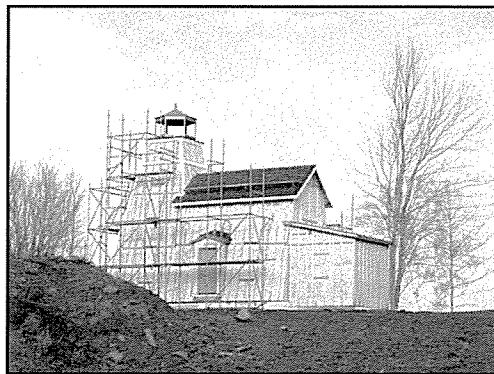
an underground cable to the lighthouse. After erecting the garage I was given some photos by Chris Mills that showed that there was a building at the original site with a similar orientation



HOISTING THE LANTERN INTO PLACE, OCTOBER, 2009. *RAYE MYLES*

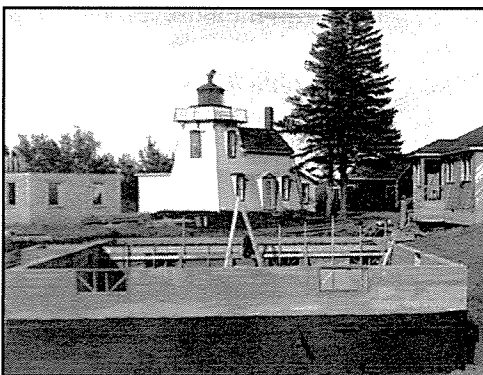
been the manufacture of the lantern room for the top of the tower. Once again I was lucky and able to find Jimmy Lockhart, a descendant of the Rathburn family (the original keepers of the Horton Light). He is a welder and he helped to recreate this lantern room from the 1883 drawings.

The plan is to have the lantern room installed, the roof shingled and the window dormers completed by the end of 2009.



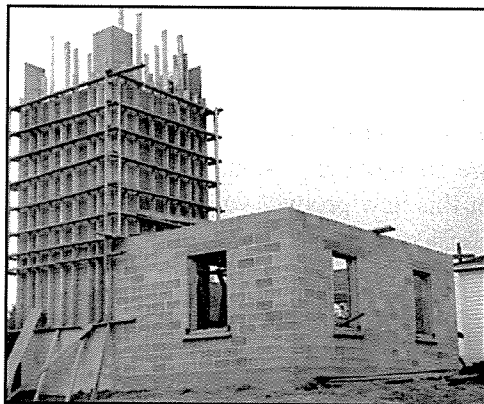
I have had many visitors to the top of the bluff since starting this project. Some have come on the water by sailboat or kayak and I have had hikers on the beach and the old railway and some who remember visiting the last keepers (Henry Harper and Rodney Henshaw) to live in the 1883 Horton Bluff lighthouse and keepers dwelling, as well as descendants of the first light keepers to tend that old lighthouse, the Rathburn Family.

A DEAD RINGER FOR THE 1883 HORTON BLUFF LIGHTHOUSE. *RAYE MYLES*



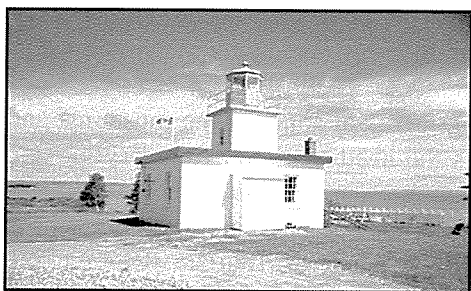
A NEW LIGHTHOUSE AND TWO KEEPER'S HOUSES BEGIN TO TAKE SHAPE AT HORTON BLUFF IN 1961. *KELLY ANNE LOUGHERY/CANADIAN COAST GUARD*

It has amazed me how after starting this project just how this piece of land and my own life have ties to the original lighthouse that caught my eye in an old photo. My father Cecil Myles who passed



THE NEW HORTON BLUFF LIGHTHOUSE AND FOG HORN, AND TWO BUNGALOWS REPLACED THE 1883 COMBINED LIGHTHOUSE/DWELLING IN 1961. *KELLY ANNE LOUGHERY/CANADIAN COAST GUARD*

away a few months before my third birthday, worked as a helper at the Horton Light before I was born, doing small tasks that needed attending to. I had no knowledge of this before starting down this path of recreating a piece of local history. My

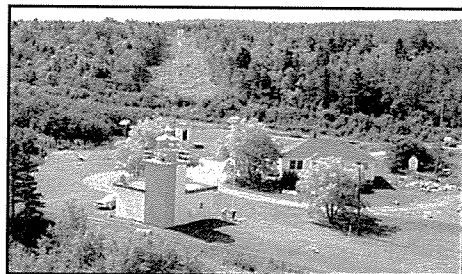


THE NEW HORTON BLUFF LIGHTHOUSE HAD NONE OF THE CHARM OF THE OLD TOWER, BUT IT WAS COMPACT AND NEAT. *KELLY ANNE LOUGHERY/CANADIAN COAST GUARD*

ers at the old light from 1940 until 1946.

I hope to learn more about the keepers of the original Horton Bluff Lighthouse and the part this little light played in the shipping history of Avonport and Hantsport area. This project will most likely take us two more years to complete and hopefully we will learn a lot more about the lighthouse that inspired us and the keepers that maintained it through the heyday of shipping on the Avon River.

Ed's note: Raye says the lantern room was craned in place on Oct 31st and he installed the glass on Saturday, November 21st.



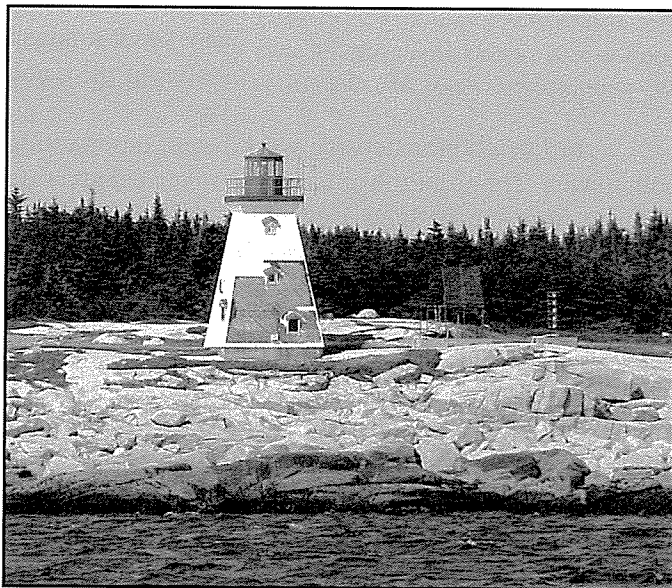
HORTON BLUFF LIGHTSTATION FROM THE AIR IN 1983. KEEPER BILL CROSBY RETIRED IN 1987 AND THE COAST GUARD DE-STAFFED THE STATION THAT YEAR. *KELLY ANNE LOUGHERY/CANADIAN COAST GUARD*



HORTON BLUFF IN 1983. *KELLY ANNE LOUGHERY/CANADIAN COAST GUARD*

NEWS AND VIEWS

Betty Island



THE BETTY ISLAND LIGHTHOUSE IN SEPTEMBER. THE COAST GUARD HAS SINCE REPAIRED STORM DAMAGE TO THIS WOODEN TOWER. *PETER MACCULLOCH*

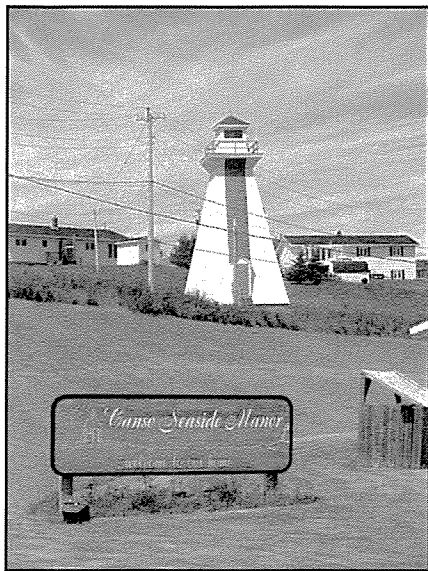
The Coast Guard has repaired storm damage at the Betty Island light off Terence Bay. The tower was also damaged by Hurricane Juan back in 2003.

Major Facelift for the Canso Range Lights

Barry MacDonald

Work began on much-needed repairs to the Canso range lights about a year ago. These ranges are located on the south side of Canso Harbour and are one of three sets that guide vessels safely into port. Originally constructed in 1905, the towers are traditional 'pepper-shaker' style and have seen several technologies come and go in how they have been lit.

The last lightkeeper, Robert Eustace, retired in 1958 and with his departure (building) maintenance was



THE REAR RANGE LIGHT AT CANSO IS AS GOOD AS NEW THANKS TO A RECENT COAST GUARD MAKEOVER. *BARRY MACDONALD*

In late 2008, extensive work began on restoring both towers. The front tower had to be relocated at a safe distance from the harbour's edge and the lantern room was rebuilt to the old specifications. Both towers received new concrete foundations and were re-clad with 'Nailite' vinyl siding. When I first heard that a vinyl product was being used, I cringed. Vinyl siding on a lighthouse?

A visit to these revamped lighthouses soon changed my mind. To fully appreciate what Coast Guard is attempting to do with using a vinyl product like this, it is important to note that maintenance dollars to keep these grand beacons

in repair have shrunk over the past 20 years. The mandate of Coast Guard would see such lighthouses replaced with low-maintenance steel towers and indeed that has been the case



THE FRONT RANGE LIGHT AT CANSO. *BARRY MACDONALD*

in instances where the old structure has been deemed beyond repair. The strong interest from the public in preserving lighthouses has Coast Guard taking a hard look before deciding to demolish and replace.

When the decision is made to renovate (as in the

case of the Canso ranges), the Coast Guard looks to find products which will look as close as possible to the original but will present fewer maintenance requirements in the long term. The bottom line is that maintenance dollars are not there to re-shingle and paint every five years. Use of this new product will see the life of these lighthouses considerably extended, which is what we all want to see happen.

It is great to see these two lighthouses get a new lease on life and it's a pleasure to report a good news story. Other lighthouses to benefit from Coast Guard improvements are Mabou, Balache Point, Caveau Point, Pictou range and soon, Grand Digue and Havre Boucher.

Cape Forchu

Denise Nickerson, Operations Manager, Cape Forchu

In 2007, the Friends of the Yarmouth Light Society participated in a tourism business development entitled "Total Market Readiness." This program worked with a broad spectrum of tourism industry operators to identify opportunities for improvement.

A recurring theme at some of the museums and historical sites was the need to clarify the storyline and key messages being presented. Therefore, an application was submitted and approved for funding by both the Nova Scotia Department of Tourism, Culture and Heritage and the Atlantic Canada Opportunities Agency.

Photo Courtesy of
YARMOUTH
Ardian Street
www.ardianstreet.com

www.capeforchulight.com

DUMPING DAY MORNING - MONDAY NOVEMBER 30TH

SHOW YOUR SUPPORT TO ALL OUR LOBSTER FISHERMEN BY COMING TO THE LIGHT

CAPE FORCHU
LIGHTSTATION

5:00 am Continental breakfast for a donation to
The Friends of the Yarmouth Light.
5:45 am Blessing of the Fleet - CJLS broadcasting live and
on VHF Channel 68.
6:00 am Departure of the Fleet

BRING YOUR FLASHLIGHTS!
For more information, call 742-7159 or email yarlighthouse@eastlink.ca

DUMPING DAY AT CAPE FORCHU. LOBSTER SEASON BEGINS ON THE LAST MONDAY OF NOVEMBER FOR AREAS 33 AND 34, WHICH COVER FROM HALIFAX TO DIGBY. EARLY-RISERS WHO JOURNEY TO CAPE FORCHU ARE TREATED TO THE SPECTACLE OF DOZENS OF BOATS RACING OUT TO SET TRAPS ON THE FIRST DAY OF THE SEASON. *COURTESY DENISE NICKERSON.*

The South West Shore Development Authority offered its leadership and staff skills in managing this project, with the support of the site and funding partners. The goal of the Yarmouth & Acadian Shores Interpretation Specialist Project will assist the Cape Forchu Light-station museum in clarifying the storyline and key messages presented to visitors.

Once the storyline has been clarified, interpretive media will be added to the site to enhance the visitors' experience. This is a 2 phase project in which phase one specifically focused on site consultation and storyline development, while phase two will concentrate on interpretive media modifications and installation.

Some of the exciting new media will include a photo mural with text at the entrance door, large mounted and laminated artworks, a wall-mounted interactive flat screen, three combination gallery bench/photo album display units. The content and storyline presented in our museum, located in the light keeper's house, will tie in with our new, existing outdoor interpretive panels.

Devil's Island

The headless Devil's Island lighthouse off Eastern Passage has been lightless for a number of months. At the heart of the issue is the deteriorated condition of the lantern deck on the 132-year-old tower, which means the Coast Guard has deemed it unsafe for technicians to access the main light.

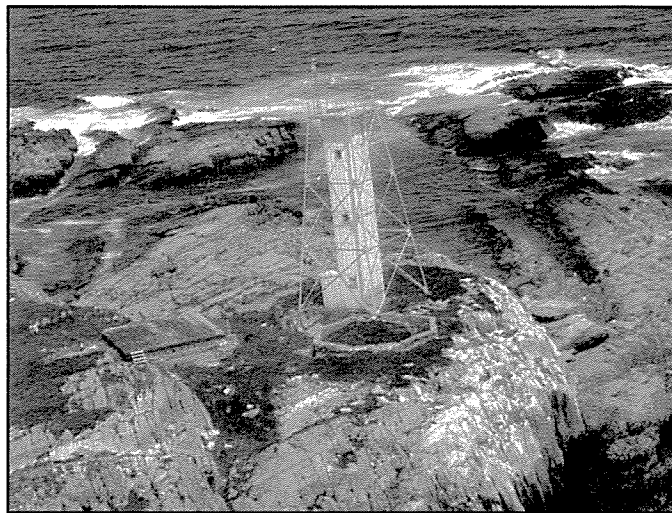
Cost estimates for restoration of the tower reportedly run as high as \$250,000 and the Coast Guard is now considering the installation of a steel tower as a replacement. Meanwhile, the Devil's Island Light Society has been looking into taking over the lighthouse. We have not heard any news from the society in recent months.

Currently, the Coast Guard says it has not yet identified a group with local support that could take over the light through the divestiture process. We understand that the federal minister responsible for the Heritage Lighthouse Protection Act (which comes into full force in May 2010) has been presented with a petition supporting the protection of the Devil's Island light.

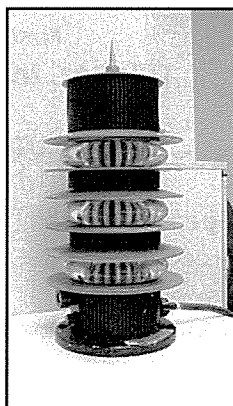
Devil's Island is also home to a mouldering keeper's house, owned by businessman Bill Mont. This historic structure is falling into ruin, and will not last many more years without basic stabilization work.

Egg Island Beams Into The Future

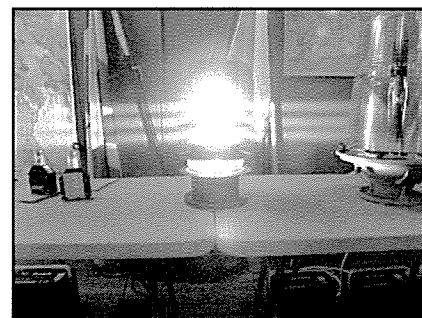
Egg Island, visible from Clam Harbour Beach on the eastern shore, will soon have a state of the art LED lighting system. The Coast Guard plans to install a Tideland's MLED 600 lens system in the tower. The lens will have a nominal range of 14.4 nautical miles.



EGG ISLAND, IN JUNE, 2009. THIS LIGHT WILL SOON RECEIVE ONE OF THE MOST POWERFUL LED LIGHTS IN NOVA SCOTIA. *BARRY MACDONALD*



THE NEW TIDELAND MLED 600 WHICH WILL BE INSTALLED IN THE EGG ISLAND LIGHTHOUSE. IT HAS A NOMINAL RANGE OF MORE THAN 14 NAUTICAL MILES. *TOM ROBERTS*

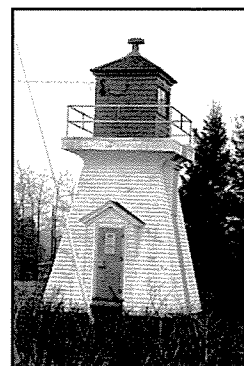


THE MLED 600 ALL LIT UP! *TOM ROBERTS*

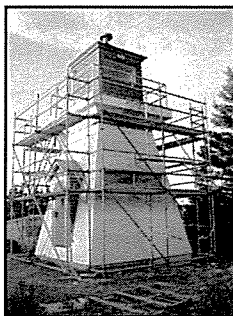
Sheet Harbour Passage Range Lights

Thanks to local support, the rear range light at Sheet Harbour Passage has escaped demolition. Local residents Karen Corbin, Janet Maybee and others joined to protest the proposed demolition, and the Coast Guard has now refurbished both of the towers, built in 1915. The wooden structures will be updated with the latest in LED lighting technology.

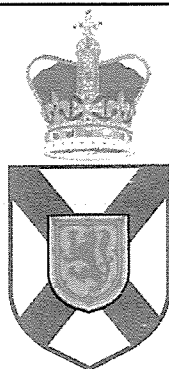
Well done!



THE SHEET HARBOUR FRONT RANGE IN 2004. *CHRIS MILLS*



RE-SHEATHING THE FRONT LIGHT AT SHEET HARBOUR PASSAGE. *KAREN CORBIN*



HANSARD 09-34
DEBATES AND PROCEEDINGS
Speaker: Honourable Charlie Parker

Published by Order of the Legislature by Hansard Reporting Services and printed by the Queen's Printer.

First Session
TUESDAY, NOVEMBER 3, 2009

RESOLUTION NO. 1007

MR. JIM BOUDREAU: Mr. Speaker, I hereby give notice that on a future day I shall move the adoption of the following resolution:

Whereas the Sheet Harbour Range Lights were built in 1915 and continue to be utilized today;
and

Whereas Nova Scotia lighthouses are a significant tourist attraction; and

Whereas Sheet Harbour area residents Karen Corbin and Janet Maybee, through their determined efforts, have saved this important piece of history and heritage from demolition;

Therefore be it resolved that the Nova Scotia Legislature recognize the importance of the Sheet Harbour Range Lights, both historically and presently, and thank Karen Corbin, Janet Maybee and the many other residents of the Sheet Harbour area who successfully lobbied for the preservation of the Sheet Harbour Range Lights.

Mr. Speaker, I request waiver of notice.

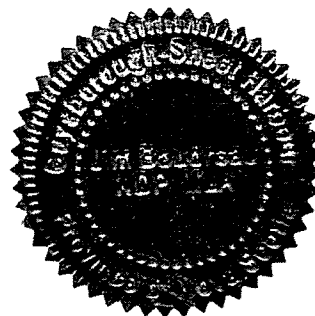
MR. SPEAKER: There has been a request for waiver.

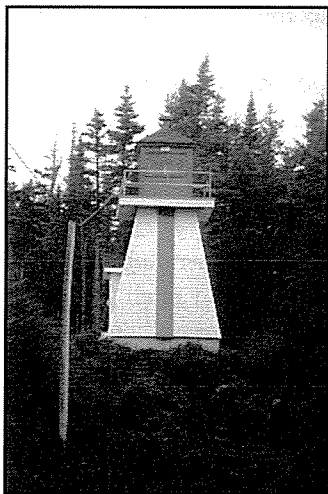
Is it agreed?

It is agreed.

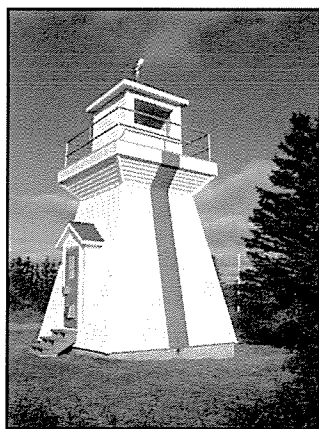
Would all those in favour of the motion please say Aye. Contrary minded, Nay.

The motion is carried.





THE SHEET HARBOUR
REAR RANGE IN 2004.
CHRIS MILLS



THE FRONT RANGE IN ALL ITS
SPLENDOR FOLLOWING REME-
DIAL WORK. KAREN CORBIN

Sambro Horn

The Sambro horn has been mostly quiet this fall and so has its local detractor. It seems the horn also has a land-dwelling supporter, as evidenced by a note recently posted on a local mailbox. It reads:

There is no greater sound or sight to the mariner homeward bound than the sound of his home foghorn or the sight of his light from his home lighthouse. These horns and lights are required by law as aids to navigation. They are upgraded from time to time to improve their quality. Granted, these later horns are electronic and do not have the personality of the old air horns. A few of them sound like the mating call of a couple of soup cans but they are necessary. They are tuned to a piano note first observed by Robert Foulis, the inventor of the [steam] fog horn.

They are also part of the historic tradition located at many places around Eastern Canada. The majority of people living near them enjoy them as part of the sound and sight of home. The audiologist who proved that the pitch is biologically damaging is the one who should make the government aware of this danger. If one does not enjoy these sights or sounds they should move. Alberta or Saskatchewan do not have these lights or horns. Be careful of Manitoba because Lake Winnipeg may have one or two.

Seal Island Lighthouse Museum Lighting

Brenda Maxwell, Cape Sable Historical Society

The Seal Island Lighthouse Museum in Barrington held its annual lighting of the second order lens on December 12. Following the lighting, visitors enjoyed a Christmas carol concert at the nearby Old Meeting House Museum. After the concert, folks enjoyed hot mulled cider and Christmas cookies across the road at the Old Court House. The annual lighting of the Seal Island lens has taken place for 24 years.

WEBSITE REPORT

Kathy Brown

The upgraded website has been active since June, but it keeps improving!

Check these features out:

The Home Page - now has changing News and Events. By going to the website you can keep up-to-date on what's happening. There'll be news of lighthouses in Nova Scotia and elsewhere and you can check if there's an activity you'd like to participate in. Send us your own notices and things you'd like to see there by using the "Contact" button at the top of the page. PDF files are welcome!

Google Maps - There's a button on the top right of every lighthouse page. Click and you get a Google Map! You can look at either the map version or the satellite. The location is based on the accuracy of the latitude and longitude we have for each lighthouse. It should be very accurate for the lights still in service.

Membership - In January, membership renewal becomes easier: You'll be able to use a credit card to pay your membership.

For others - it's another matter. Many were taken before the Global Positioning System (GPS) and some were off. We've corrected the one that was in the middle of New Brunswick, but there will be more. When you find an inaccurate position, do let us know and provide us either with a Lat/Lon location using GPS, or a nearby geographic pointer, such as a point of land or village that will allow us to edit the location.

Lighthouses to Visit - Click on "About Nova Scotia Lighthouses" go to "Lighthouses to Visit" and have some fun sorting them out!

New Searches - will come soon under the "Search" button

Webstats - We've had a new system for the past several months which gives a lot of information. The stats are useful for the people who look after the website and they're sometimes fun. We had 6,460 visitors in October, and from Nov. 1 - 23, there were 6,152. We get the visitor's countries: For November: Canada 404 ; United States 431; China 233; UK 29. In Nova Scotia, in descending order: Halifax 110; Dartmouth 36. Earlier we had 17 visitors from Newport Corner! There's an elementary school at Newport Station. Did a teacher give a project on lighthouses, or do we have an enthusiastic group over there? If anyone knows, let us know!

* * *

FAREWELL

Long-time NSLPS member Evelyn Coates passed away on November 13th at the age of 82. As well as being a supporter of Nova Scotia lighthouses, Evelyn was a member of the Cumberland County Museum and the Nova Scotia Bird Society. She was pre-deceased by her husband, Dr. W.O. Coates.

Wilfred 'Léonie' Chiasson of Cheticamp, Cape Breton died June 19, 2009 in Cheticamp.

After serving in the second world war, Léonie was appointed lightkeeper at Enragée Point on Cheticamp Island, in 1948. He served at the station for 31 years. He is survived by his wife Annie Rose – they were married for 62 years.

TOM FORRESTALL PRINTS AVAILABLE

Internationally renowned painter Tom Forrestall really likes Sambro Island. The Dartmouth-based artist visited the island several times last year to paint the island and its historic lighthouse. If you're interested in purchasing a beautiful Tom Forrestall limited-edition print of the historic Sambro Lighthouse, contact Joanne McCormick at (902) 425-0350. There are two prints to choose from, and each print is priced at \$250.

DOOMSDAY LIST

This is a partial list of Canadian lighthouses and lightstation buildings in danger of being lost through neglect and environmental conditions. Please contact the editor with any suggestions or comments.

Bear River, NS Decommissioned wooden lighthouse

Cape North, NS 1981 wooden lighthouse

Cape Roseway, NS Dwellings and old fog alarm building

Country Island, NS Keepers house (one house burned in 2005)

Cross Island, NS Keepers houses

Devils Island, NS Wooden lighthouse and keeper's house

Fish Fluke Point, NB Combined light and dwelling

French Point, NS Wooden lighthouse

Gannet Rock, NB 1831 wooden tower and attached concrete keepers' house

Georges Island, NS Keeper's house

Green Island, Richmond Co., NS Keeper's house and old lighthouse (one house burned in 2005)

Guyon Island, NS Keepers' houses

Ingonish Island, NS Concrete lighthouse and keeper's house

Isaac's Harbour, NS Combined dwelling/lighthouse

Keppel Island, NF Lighthouse, keepers' houses, fog alarm building, boat house

***Liscomb Island, NS** Concrete lighthouse

Louisbourg, NS

Margaree Island, NS Lighthouse and dwelling

Moshers Island, NS Keepers' houses and small fog alarm building. Paddy's Head wooden lighthouse

Peases Island, NS Keepers' duplex

Queensport(Rook Island), NS Combined dwelling/lighthouse

Sambro Island, NS Assistant keeper's dwelling, Gas House and fog alarm building

Seal Island, NS Lighthouse, radio operator's house, barn

Southwest Point, Anticosti Island, QC

Saint Paul's Island, NS Southwest lightkeeper's house, wireless operator's house at Atlantic Cove



ON AUGUST 12, NSLPS PRESIDENT BARRY MACDONALD SPOKE AT THE NORTH HIGHLANDS COMMUNITY MUSEUM IN THE VILLAGE OF CAPE NORTH, CAPE BRETON. THE TOPIC OF BARRY'S TALK WAS "PRESERVING THE LIGHTHOUSES OF NOVA SCOTIA."

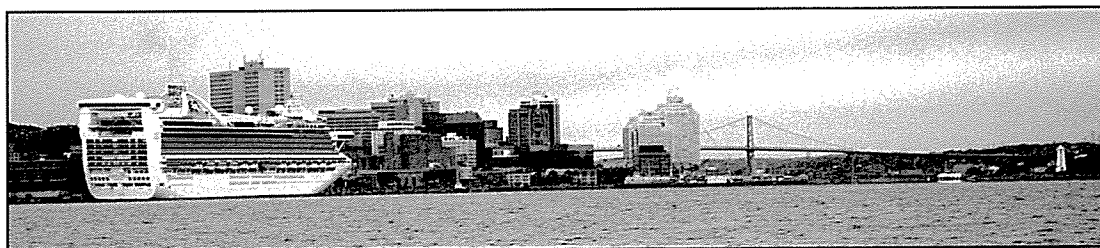
IN THE AUDIENCE WERE EIGHT PEOPLE WHO HAD SERVED AS LIGHTHOUSE KEEPERS (OR WERE MEMBERS OF A LIGHTHOUSE KEEPER'S FAMILY) IN NORTHERN CAPE BRETON.

IN THE CENTER IS A MODEL OF THE SECOND MONEY POINT LIGHTHOUSE, CONSTRUCTED BY JEFFREY GROVER, A STUDENT AT CABOT HIGH AND SUMMER STUDENT GUIDE AT THE MUSEUM. LEFT TO RIGHT: GEORGE MACLELLAN (THE LAST LIGHTHOUSE KEEPER OF CAPE ST. LAWRENCE); BARRY MACDONALD (PRESIDENT, NS LIGHTHOUSE PRESERVATION SOCIETY); SUZANNE MACDONALD (CAPE NORTH LIGHTHOUSE);

GERRY O'NEIL (NORTH EAST ST. PAUL ISLAND, SAMBRO ISLAND AND MANY OTHERS); GEORGE TURNER (CAPE NORTH LIGHTHOUSE); JIM ROGERS (NE ST PAUL ISLAND); EDITH BUDGE (SOUTHWEST ST. PAUL ISLAND); BILL BUDGE (WHO GREW UP AT SW ST. PAUL ISLAND) AND JOHN MCEVOY (NE ST PAUL ISLAND). NORTH HIGHLANDS COMMUNITY MUSEUM



GRAHAM McBRIDE'S MODEL LIGHTHOUSE GUIDES THE RMS *TITANIC* AT THE HALIFAX PUBLIC GARDENS THIS PAST SUMMER. *GRAHAM McBRIDE*



THE CRUISE SHIP *CARIBBEAN PRINCESS* DWARFS THE GEORGES ISLAND LIGHTHOUSE IN HALIFAX HARBOUR IN OCTOBER, 2009. *CHRIS MILLS*

The Lightkeeper is published by the NOVA SCOTIA LIGHTHOUSE PRESERVATION SOCIETY, c/o Maritime Museum of the Atlantic, 1675 Lower Water Street, Halifax, B3J 1S3, Editor: Send items for publication to *The Lightkeeper*, c/o Chris Mills, 1121 Ketch Harbour Road, Ketch Harbour, Nova Scotia, B3V 1K7, or e-mail ketch1@eastlink.ca. Deadline for March 2010 issue: February 20, 2010.

NSLPS MEMBERSHIP FORM: January 1 - December 31, 2010 ☐ New ☐ Renewal: Membership # _____

NAME: _____

TELEPHONE: _____

ADDRESS: _____

POSTAL CODE: _____

E-MAIL: _____

CELL PHONE: _____

Family/Group names for extra cards: _____

Single - \$20.00 Institutional/Group - \$30.00

Patron - \$100.00

Family - \$25.00 Sustaining - \$50.00

Foreign - \$15.00 U.S. Funds, or equivalent.

Amount enclosed \$ _____ Please make cheques payable to the Nova Scotia Lighthouse Preservation Society

Mail to: THE NOVA SCOTIA LIGHTHOUSE PRESERVATION SOCIETY

c/o Maritime Museum of the Atlantic, 1675 Lower Water Street, Halifax, Nova Scotia, B3J 1S3



VISITORS ENJOY THE SANDY POINT LIGHTHOUSE NEAR SHELBURNE, ON A BEAUTIFUL FALL DAY. *CHRIS MILLS*